



You're Invited  
**LEARN ABOUT THE 2023 HABITAT PROJECT**  
 Upper River Bend Phase 1 at Ancil Hoffman Park

You're invited to learn about a new project to enhance crucial habitat for native fall-run Chinook salmon and steelhead trout in the Lower American River at Upper River Bend at Ancil Hoffman Park.

The Ancil Hoffman area of the river is important to the survival of salmon and steelhead. A 2021 habitat enhancement near the Effie Yeaw Nature Center produced a noticeable surge in redds—underwater depressions or “nests” created by female salmonids to lay their eggs.

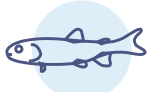
**The 2023 Project Will Provide:**



**Nearly 5 acres of spawning habitat for adult salmon and steelhead to create redds,** constructed by placing 30,000 cubic yards of clean gravel into the flowing river.



**Nearly 6 acres of rearing habitat for young fish to hide from predators, find food and grow,** created by carving a 2,000-foot side channel into the existing gravel bar and shaping 3.7 acres of seasonal floodplain.



**Hiding and resting places for young fish by placing about 60 large woody tree structures** into the side channel.



**Over 3 acres of enhanced riparian landscape by planting or seeding the project area** with willows or native flowers and grasses after construction.



**VIRTUAL INFORMATION SESSION:**  
**Wednesday, July 12, at 6 p.m.**

**Learn About:**

- The importance of the Ancil Hoffman area to the survival of salmon and steelhead
- Results of the 2021 Habitat Project that occurred near the Effie Yeaw Nature Center
- Preview of the 2023 habitat project at Upper River Bend near the Ancil Hoffman Golf Course
- What neighbors and park visitors can expect during construction

Please RSVP at [waterforum.org/habitat2023](http://waterforum.org/habitat2023) to receive access information.

**SPECIAL TOURS FOR LOCAL RESIDENTS**

The Water Forum is planning to offer tours of the construction zone for local residents. Learn more and sign up at [waterforum.org/habitat2023](http://waterforum.org/habitat2023).

**More Information**

Visit [waterforum.org/habitat2023](http://waterforum.org/habitat2023) or reach the project team at (916) 808-1997 or [contact@waterforum.org](mailto:contact@waterforum.org)



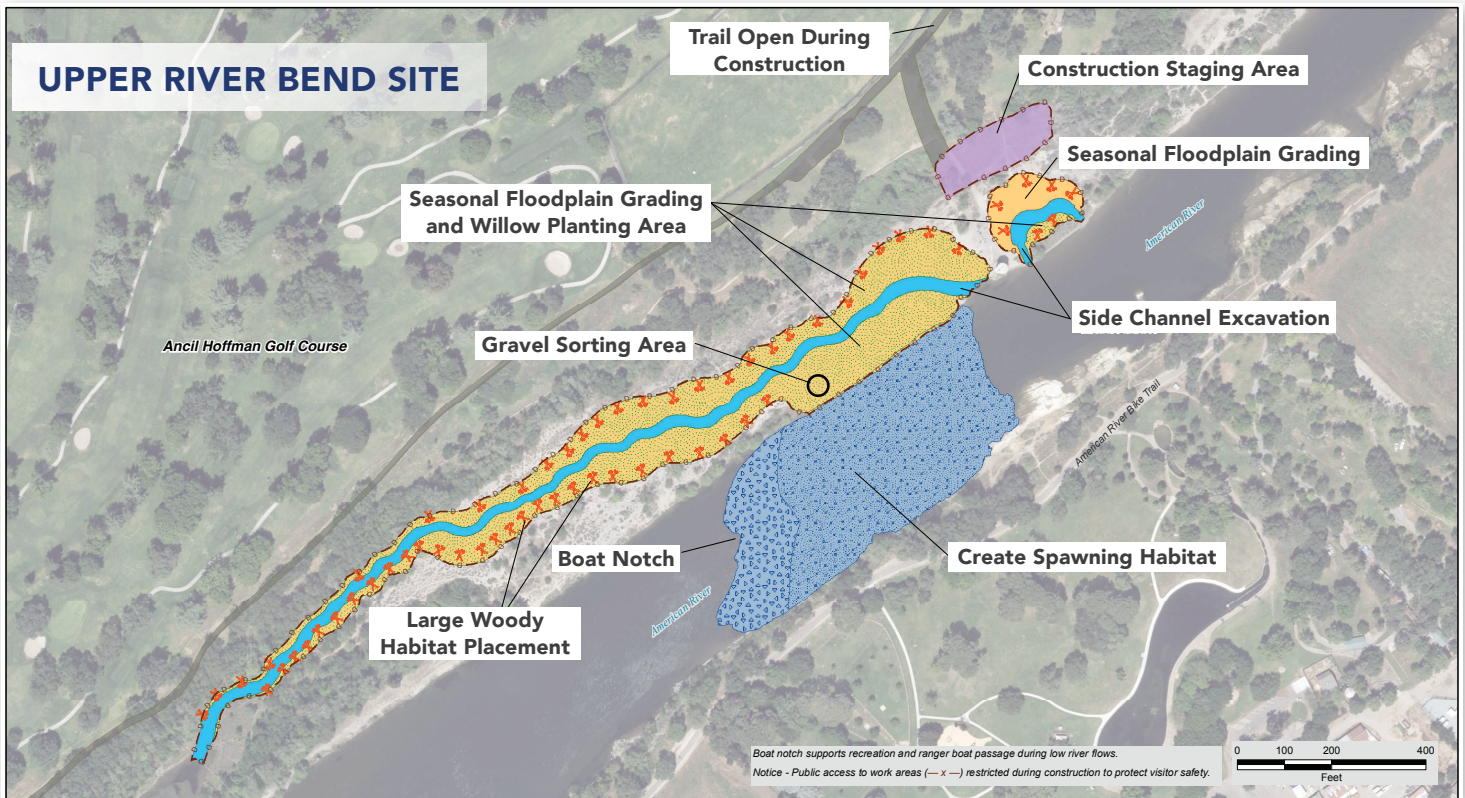
## Overview

Each year, the Water Forum works to create and enhance habitat for native salmon and steelhead trout. Both species migrate to the Lower American River as adults to spawn. Fall-run Chinook salmon generally spawn from October through December and steelhead spawning generally occurs January through March. In the egg-laying process, females create a redd in loose gravel in flowing water, deposit their eggs, and then cover them with more gravel. Once hatched, young fish move to the river's slower moving floodplain and side channel areas to find protection from predators and grow before swimming out to the Pacific Ocean.

## Project Details

### WHERE AND WHEN:

- **The 2023 project area is the Lower American River at Upper River Bend (Ancil Hoffman Park across from the golf course driving range).** The construction zone will start just past the public golf course parking lot on Tarshes Drive and extend downriver to about the southern edge of the golf course.



- **The project is scheduled to take place in the August-to-October 2023 timeframe.** Construction could take up to eight weeks and in-river work will finish no later than October 31, before anadromous Chinook salmon return in high numbers from the Pacific Ocean to the Lower American River.
- **Crews may be on site Monday through Saturday from 6 a.m. to 6 p.m.** (noise starting at 7 a.m.) with in-river work occurring only on weekdays (and not on Labor Day).

### WHY:

- **Habitat is limited:** Each year, thousands of native salmon and steelhead adults use the Delta and Sacramento River like a highway to move to their native spawning areas in the Lower American River. Historically, they utilized over 100 miles of mainstem and upper watershed habitat before Folsom and Nimbus dams blocked their passage. Dams also trap vital sediment needed to replenish spawning areas that naturally erode over time in our dynamic river. The Water Forum identifies areas like Upper River Bend at Ancil Hoffman Park to replenish gravel up and down the river to help stay ahead of these processes and support the fishery. In spring, newly hatched young fish use the same corridor to outmigrate.
- **Habitat projects produce measurable results:** The 2021 habitat project at Ancil Hoffman Park near the Effie Yeaw Nature Center produced a noticeable surge in Chinook salmon redds—from just 64 redds at the site in fall 2020 to more than double just a few months after project construction.

*The Water Forum includes a diverse group of water providers, environmentalists, business groups and local governments working to balance water supply needs with protection of the Lower American River. This is the Water Forum's 13th project enhancing fish spawning and rearing habitat on the Lower American River since 2008.*

#### **WHAT VISITORS AND NEIGHBORS CAN EXPECT:**

- **Noise:** Most of the noise is expected to come from machinery that washes and sorts gravel before it is placed into the river. The project team contains this noise to the hours of 7 a.m. to 6 p.m. Monday-Saturday.
- **Gravel hauling and tree delivery traffic:** The project will source gravel from onsite and haul excess material out of the park for use in other areas of the American River Parkway. The project will also reuse decommissioned orchard trees for woody habitat that will be delivered to the site. Hauling traffic is expected to take place Monday through Saturday over a 22-day period with one to three trips per hour. Trucks will travel via Tarshes Drive, south onto California Avenue and west onto Van Alstine Ave.
- **Access to the walking trail:** The walking trail circling the golf course and along the river will remain open with fencing and signage to direct the public around construction areas and potential hazards.
- **Access to Ancil Hoffman Golf Course:** The project is not expected to impact access to the golf course.
- **Access to the river:** During construction, access to the river from the shore will be blocked to the public within the construction areas. During off-work hours, construction areas and equipment will be secured with fencing and on-site security. The public will have access to the river along the shore in any areas where it is safe.
- **Parking:** Public parking is not expected to be impacted.
- **Employee traffic:** The project team includes about a dozen employees who will travel to and from the project site twice daily (at the beginning and end of the day) via Tarshes Drive.
- **Equipment traffic:** The project will use heavy equipment to excavate, move, wash and place gravel into the river, as well as create a side channel. This equipment includes large bulldozers, excavators, front loaders and trucks. The equipment will move into and out of Ancil Hoffman Park at the beginning and end of the project.



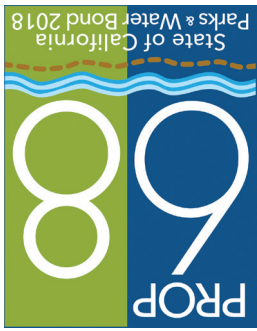
#### **HOW IS THE PROJECT EXPECTED TO IMPACT RAFTERS?**

The project team is working to minimize impacts on rafters moving through the Ancil Hoffman area. In-river construction will take place during weekdays only (and not on Labor Day). Signage will be placed at popular upriver entrance points to alert boaters of the work occurring downstream. When in-river work is occurring, the project team will be on alert and communicating with equipment operators to allow for safe passage through the construction site.





1330 21st Street, Ste. 103  
Sacramento, CA 95811



BUREAU OF RECLAMATION



SACRAMENTO AREA FLOOD CONTROL AGENCY



SACRAMENTO Department of Utilities

The 2023 Habitat Project is made possible by grant funding from the California Natural Resources Agency (Proposition 68) and the U.S. Bureau of Reclamation (Central Valley Project Improvement Act).

**Thank You Partners!**

(or scan the QR code using the camera app on your phone).

Find project details inside or learn more at  
[waterforum.org/habitat2023](http://waterforum.org/habitat2023)

A new project to enhance crucial habitat for native fall-run Chinook salmon and steelhead trout is coming to Ancil Hoffman Park in the Lower American River near the Golf Course in August/September 2023.



**HABITAT PROJECT CONSTRUCTION AT ANCIL HOFFMAN PARK**

**PUBLIC NOTICE**

